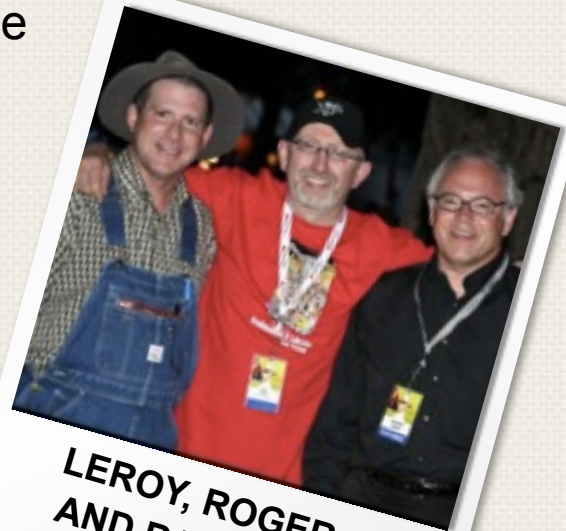




## Thank you for volunteering at the festival!

Welcome to the 35th Annual Newfoundland and Labrador Folk Festival! We hope you enjoy your time at the festival. Your time, energy, and dedication are what make this festival possible.

**Thank you!**



**LEROY, ROGER,  
AND RAYMOND**



**CROWDS AT THE FESTIVAL GATE**



**SUE, JILL, CHARLOTTE,  
AND ALF**

# Volunteering at the NL Folk Festival

Volunteering at the Newfoundland and Labrador Folk Festival is a great way to become more involved in your community and contribute to the success of the festival. From selling programs to billeting musicians, you help make our festival possible.

This year all the registration of volunteers will be done through an online system called Volunteer2. Please visit [www.nlfolk.com/fest2011/volunteers](http://www.nlfolk.com/fest2011/volunteers) to sign up.

---

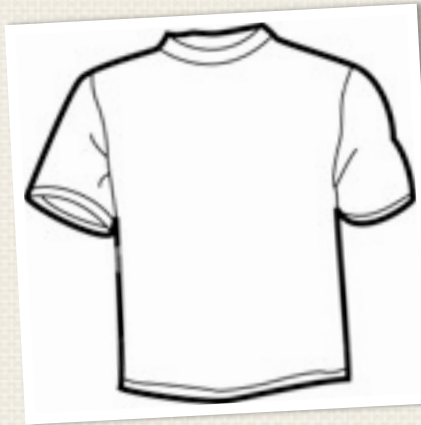
ALL VOLUNTEERS MUST  
VOLUNTEER FOR 2 SHIFTS  
AND WILL RECEIVE  
COMPLIMENTARY ACCESS  
TO THE FESTIVAL FOR AN  
ADDITIONAL 3 SESSIONS.

---

All of our communication will volunteers will be made through e-mail and, if necessary, telephone based on the information you input into your Volunteer2 profile.

We will be hosting a special orientation for volunteers ahead of the festival and, this year, we will have separate Sign In desk just for volunteers which will be located on Military Road. As such, all volunteers will enter through the Military Road entrance and not the Festival's Main Entrance.

## VOLUNTEER TSHIRT



Please **wear your volunteer t-shirt for each of your volunteer shifts** so that you are easily recognizable by Festival organizers, patrons and other volunteers. Please do not wear your volunteer t-shirt during the festival when you are not working a volunteer shift as you may be put to work. At the end of the festival, the t-shirt is yours to keep as a festival souvenir!

## WRISTBANDS



You must **sign in at the at the Volunteer Sign In desk on military road** at the beginning of each sessions. Whether you are coming for one of your two volunteer shifts or for one your three complimentary session, **you will be given a wristband that will serve as proof of admittance** to the given session. You will need to sign in at the beginning of each session at the Military Road Volunteer Sign In desk.

## BEER TICKETS



You will be given **one free beer ticket at the end of each shift** you work and these can be redeemed at anytime during the Festival weekend at the beer tent. At the end of your volunteer shift, make sure to visit the sign in desk to obtain your beer ticket.



# VOLUNTEER APPRECIATION



## ORIENTATION

We are going to have a **volunteer orientation party** on July 21st at the Rocket Room. You will get a chance to meet other volunteers, meet the festival chiefs, learn some tips and tricks about volunteering at the festival, play fun festival trivia games and pick up your volunteer package. Volunteers will receive an e-mail with more information about the orientation closer to the date of the event.

## INFORMAL SESSION

On Sunday evening, after the Festival is over, there will be an **informal get-together at the Ship Pub**. Your wristband will be your admission ticket to the event so please don't remove it.

## VOLUNTEER PARTY

We will be hosting a **Volunteer Thank You Party** in the weeks following the Festival. Details are still being finalized, but volunteers will receive an e-mail with more information about the orientation closer to the date of the event.

## REVIEW OF IMPORTANT INFORMATION

1. Please ensure that you check in at the Volunteer Sign In desk at least 30 minutes before your shift so that you have time to sign in, obtain your wristband, and report to your crew chief 15 minutes before the start time of your shift.
2. If you realize that you cannot make your shift, please change your availability your profile on the online Volunteer2 system immediately. If an emergency arises on the day of your shift, please call your crew chief to inform them.
3. Please remember that the Volunteer Sign In desk is not located at the main entrance (by the playground), but rather has it's own special entrance on Military Road. You must sign in at that desk at the beginning of every session you attend, whether you are coming to work one of your shifts or for one of your complimentary sessions.
4. Please be punctual and remember that we are counting on you to attend both of your volunteer shifts.
5. Water will be made available to volunteers during your shifts.



Folk Arts Society  
204-223 Duckworth Street  
St. John's, A1C 6N1

Phone: (709) 576-8508  
Fax: (709) 757-8500